

Small Erosion Repair Program

Jeff Schuette
Flood Maintenance Office
Department of Water Resources

PUBLIC SAFETY

ENVIRONMENTAL STEWARDSHIP

ECONOMIC STABILITY

Presentation Agenda

- Key Goal of SERP Program
- SERP Coverage
- Progress Under Resolution 2012-20-02
- Potential SERP Sites Identified

SERP Goal

- **BENEFIT: PUBLIC SAFETY and ENVIRONMENT**
 - Reduce Number of Large Scale Repairs
 - Prevent Escalating Loss of Existing Vegetation



Prevent Small Erosion Sites



From Becoming Large Scale Repairs

SERP Pilot Program

- Five year “pilot”
- Fifteen erosion repairs per year
- DWR-maintained levees



Progress

Interagency Flood Management Collaborative Group

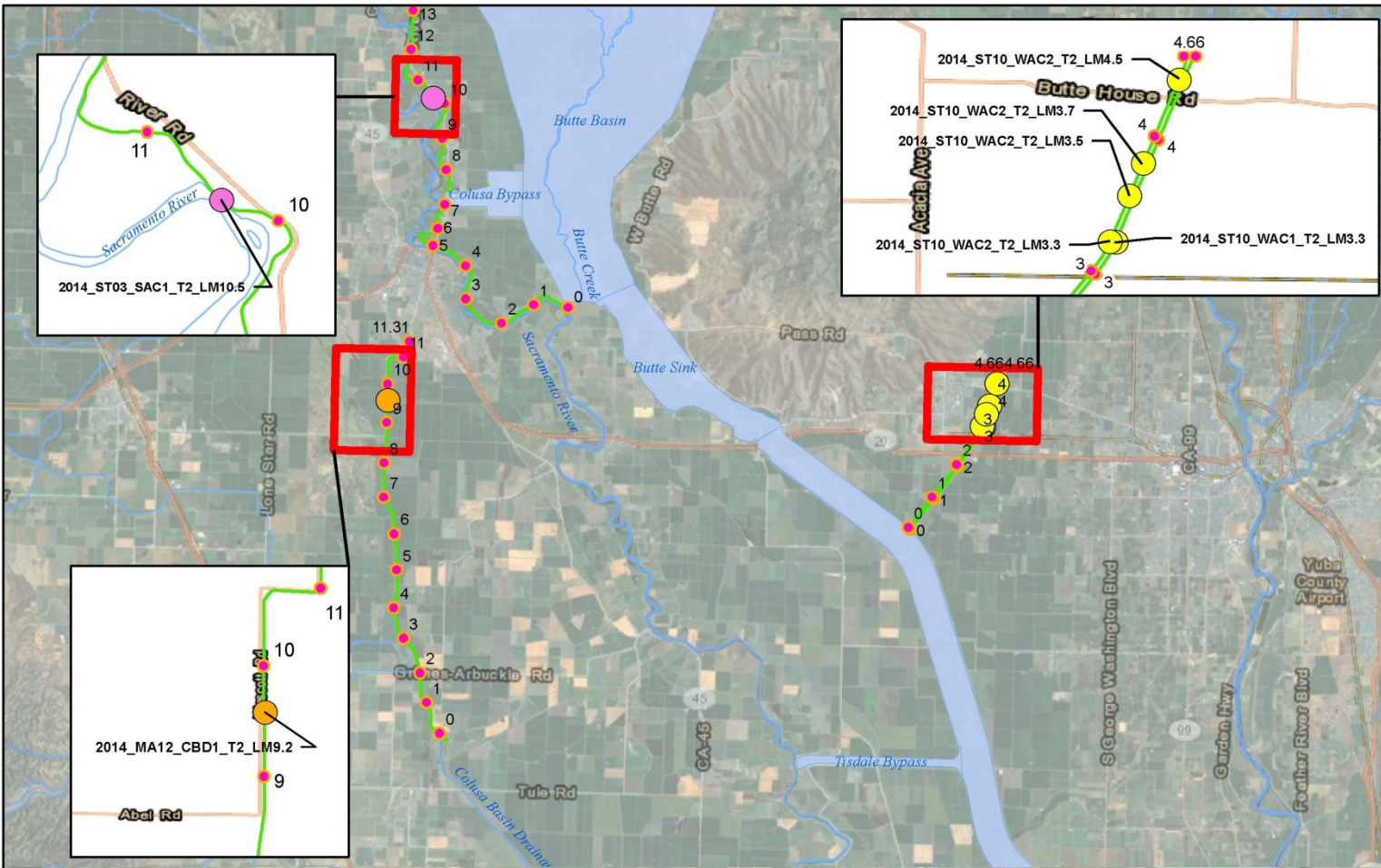


Potential SERP Sites

SERP: Improving OPERATIONS AND MAINTENANCE OF LEVEES



Potential SERP Sites



Division of Flood
Management
Flood Maintenance Office



SERP Sites Locations

- Colusa Drain (MA12)
- Sacramento River (ST03)
- Wadsworth Canal (ST10)

- Willow Slough Bypass (ST12)
- Levee Mile Markers
- Levee Centerline

DWR SMALL EROSION REPAIR PROGRAM 2014 SITE LOCATIONS



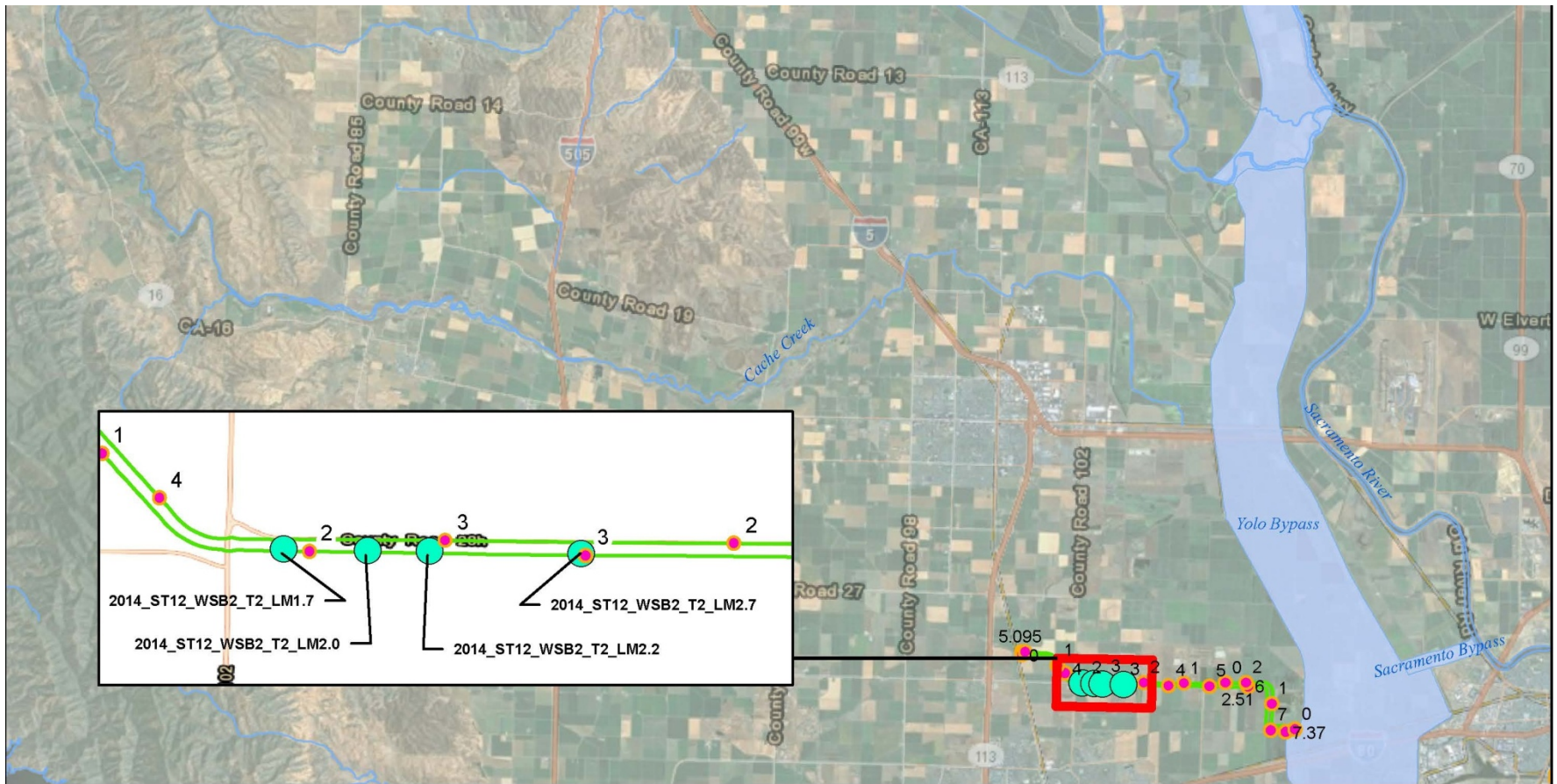
Prepared By: Erica Fong

Date: March 3, 2014

Path:

G:\Projects\SERP\SERPImplementationMaps\OverallMaps\SERP2014ImplementationLocationPoints

Potential SERP sites



Division of Flood
Management
Flood Maintenance Office



SERP Sites Locations

- Colusa Drain (MA12)
- Sacramento River (ST03)
- Wadsworth Canal (ST10)

- Willow Slough Bypass (ST12)
- Levee Mile Markers
- Levee Centerline

DWR SMALL EROSION REPAIR PROGRAM 2014 SITE LOCATIONS



Prepared By: Erica Fong

Date: March 3, 2014

Path: C:\Private\SEB\SEBImplementation\Map\Cover\Map\SEB2014\Implementation\sectionPrint